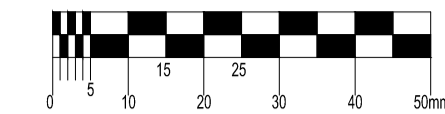


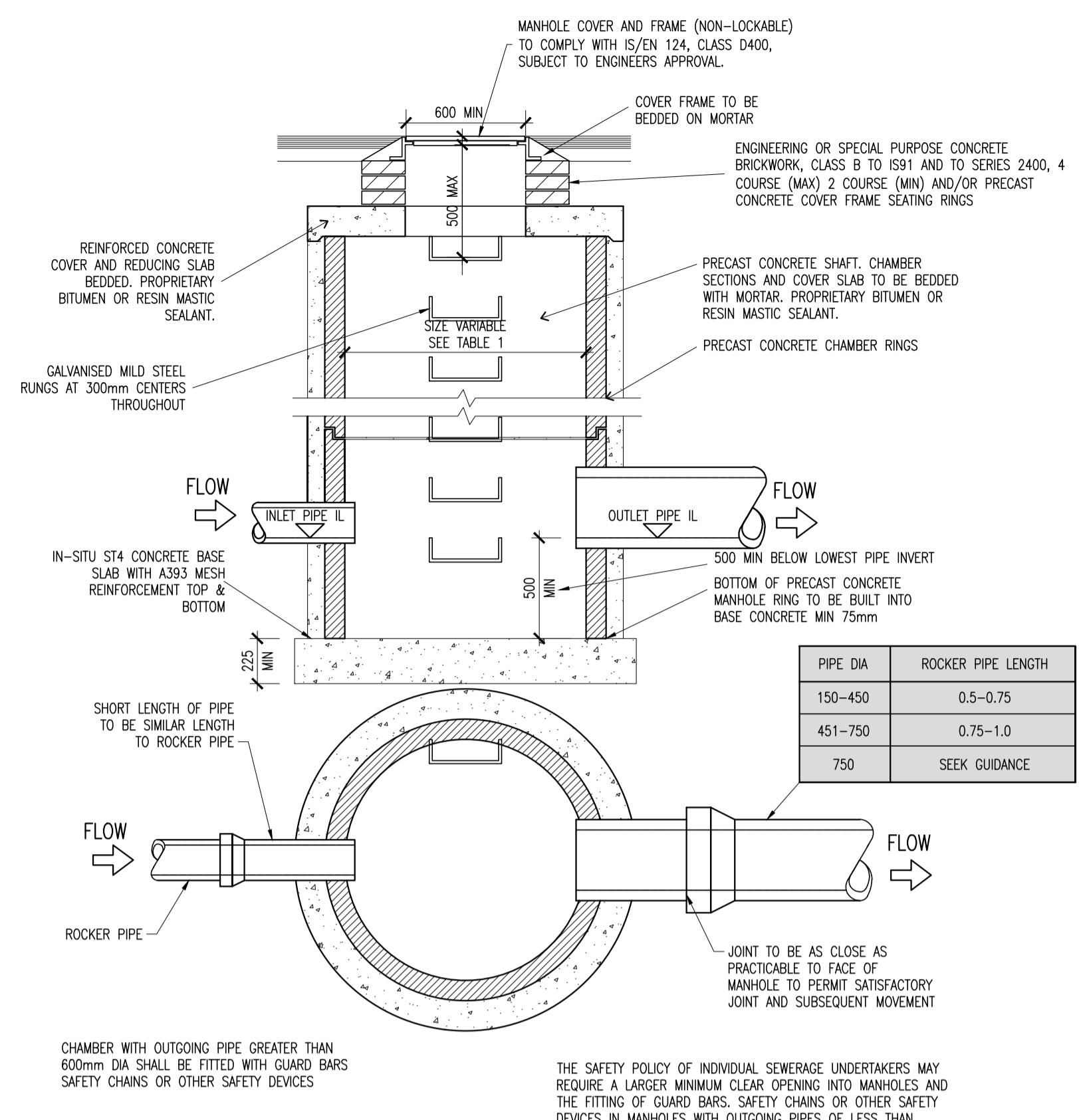
ON ORIGINAL



NOTES:

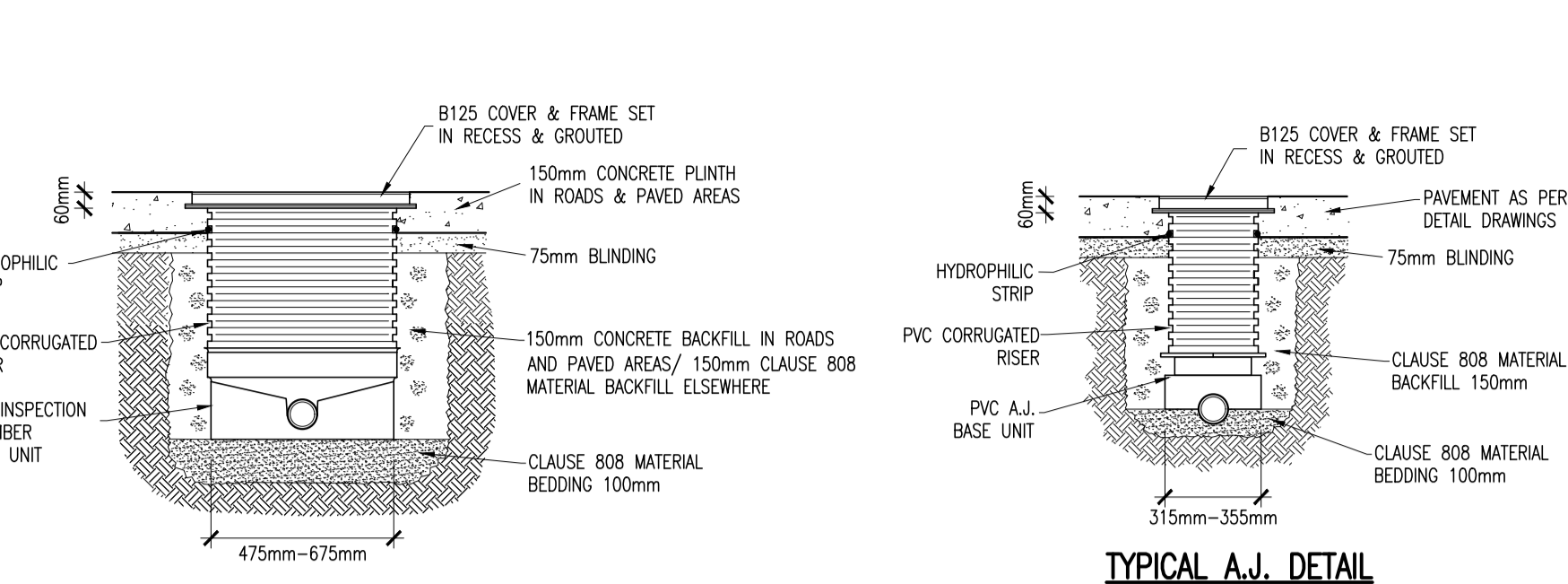
- C20/25 CONCRETE TO HAVE A MINIMUM CEMENT CONTENT OF 280kg/m³, MAXIMUM WATER/CEMENT RATIO OF 0.65 AND SLUMP CLASS S2.
- C25/30 CONCRETE TO HAVE A MINIMUM CEMENT CONTENT OF 280kg/m³, MAXIMUM WATER/CEMENT RATIO OF 0.65 AND SLUMP CLASS S2.
- C40/50 CONCRETE TO HAVE A MINIMUM CEMENT CONTENT OF 400kg/m³, MAXIMUM WATER/CEMENT RATIO OF 0.45 AND SLUMP CLASS S3.
- WHERE CLASS 6/1/6/2 CAPPING MATERIAL IS PROPOSED WITHIN 500mm OF CONCRETE OR STEEL, CLASS 6N TO BE USED INSTEAD.

NOTE:
ALL WORKS & SPECIFICATIONS TO BE UNDERTAKEN IN ACCORDANCE WITH:
• TII SPECIFICATION FOR ROADWORKS
• GREATER DUBLIN CODE OF PRACTICE FOR DRAINAGE WORKS
• RECOMMENDATIONS FOR SITE DEVELOPMENT WORKS
• IRISH WATER CODE OF PRACTICE AND STANDARD DETAILS



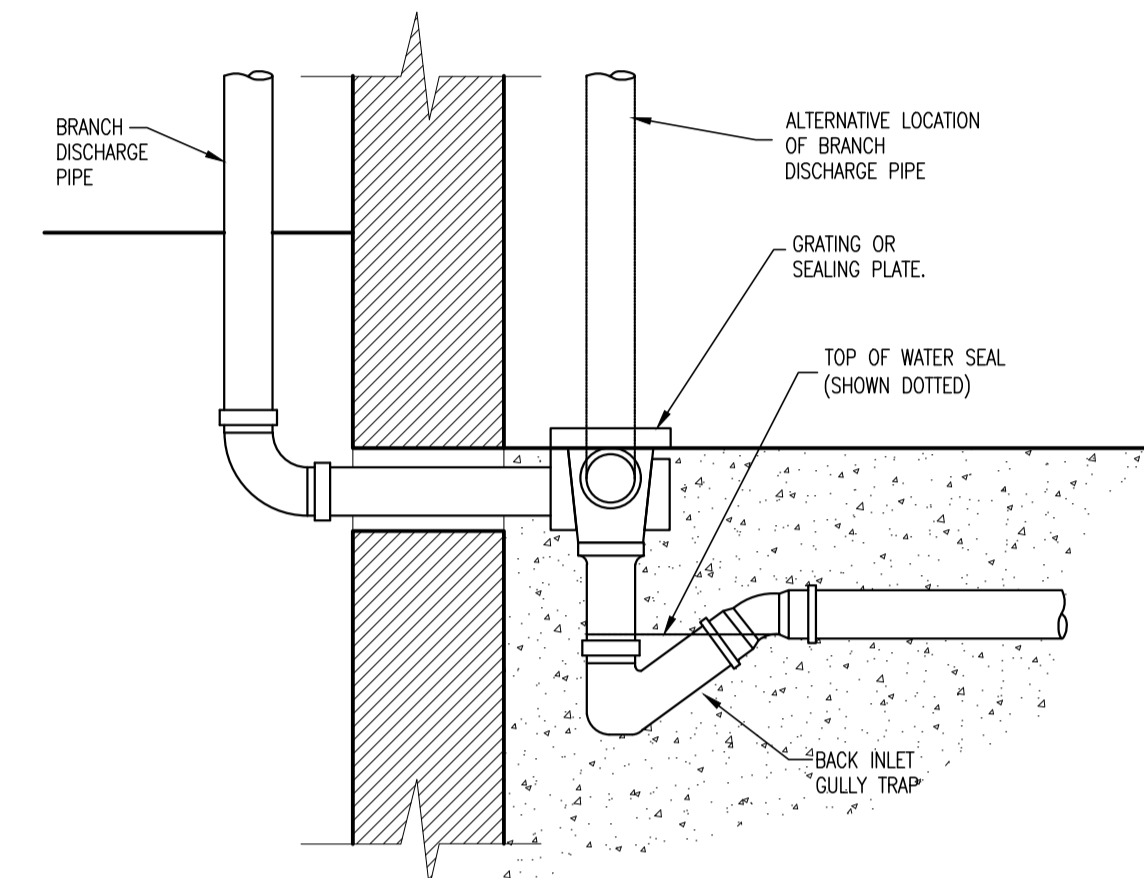
PIPE DIA	ROCKER PIPE LENGTH
150-450	0.5-0.75
451-750	0.75-1.0
750	SEEK GUIDANCE

TYPICAL CATCHPIT/SILT TRAP MANHOLE DETAIL
1:25

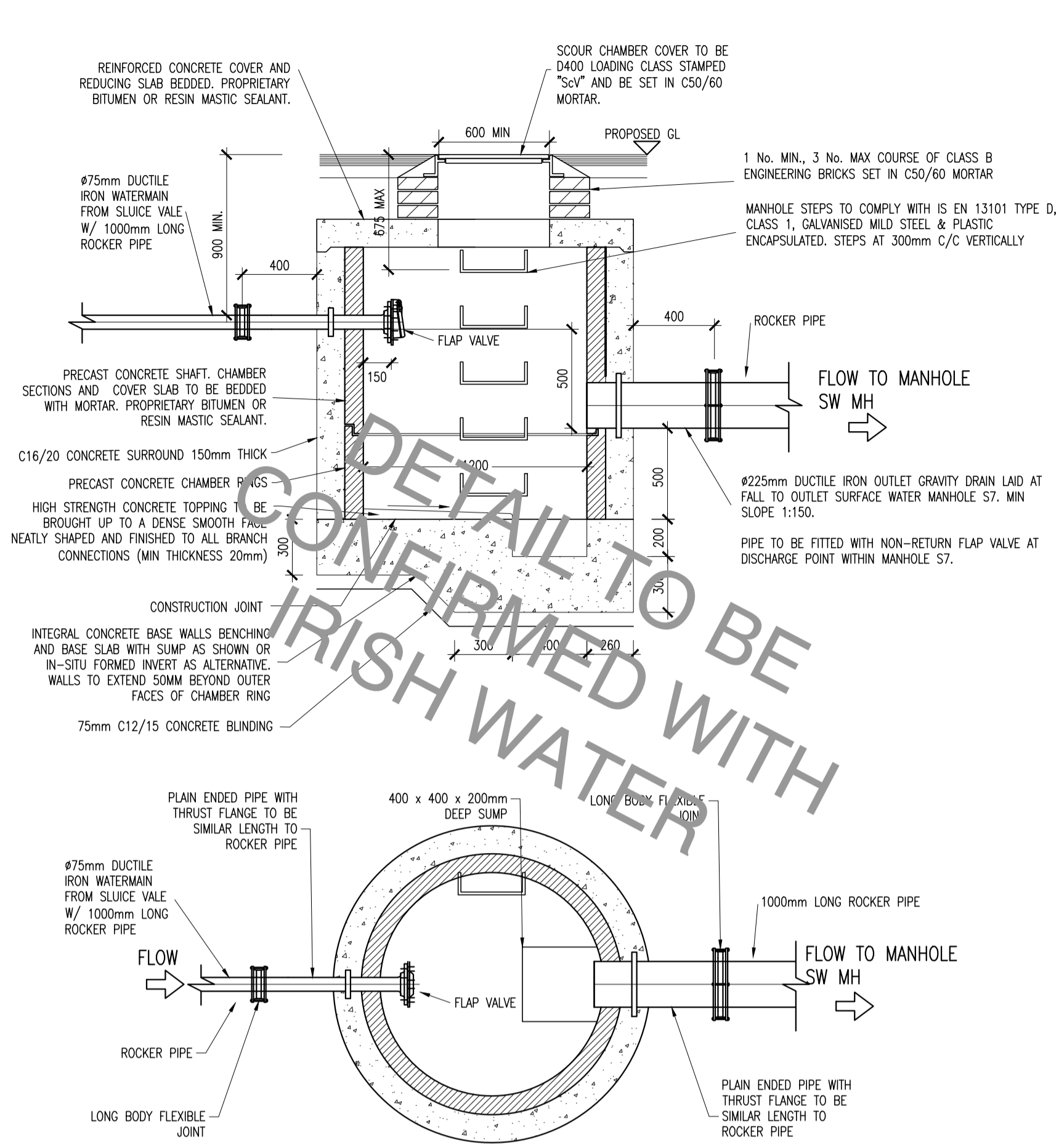


TYPICAL INSPECTION CHAMBER

TYPICAL A.J. DETAIL



BACK INLET GULLY TRAP

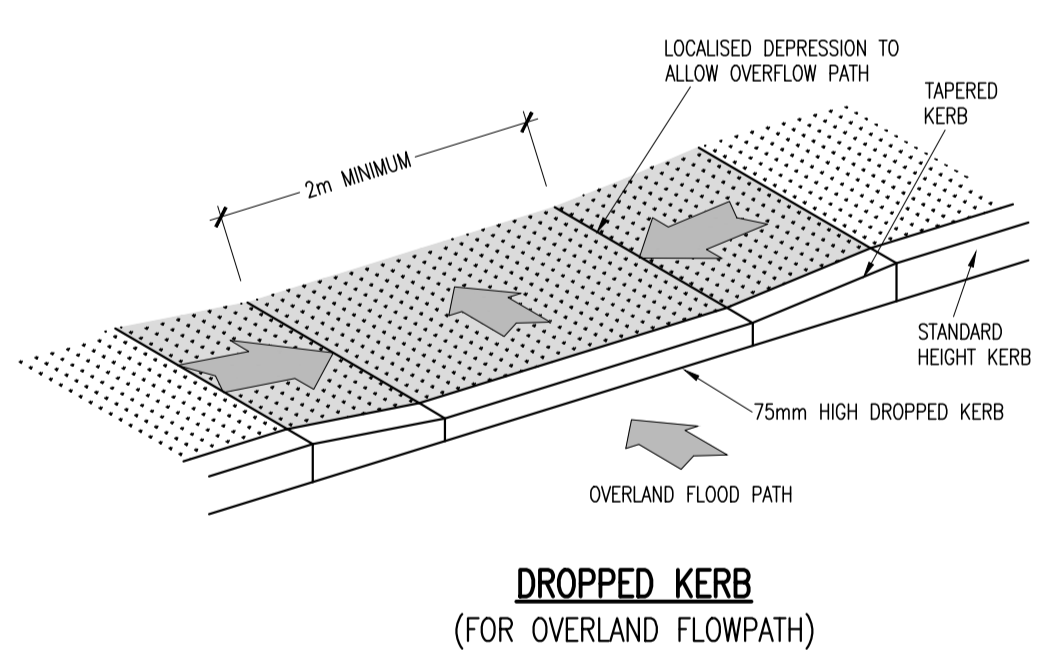


TYPICAL SCOUR MANHOLE CHAMBER DETAIL

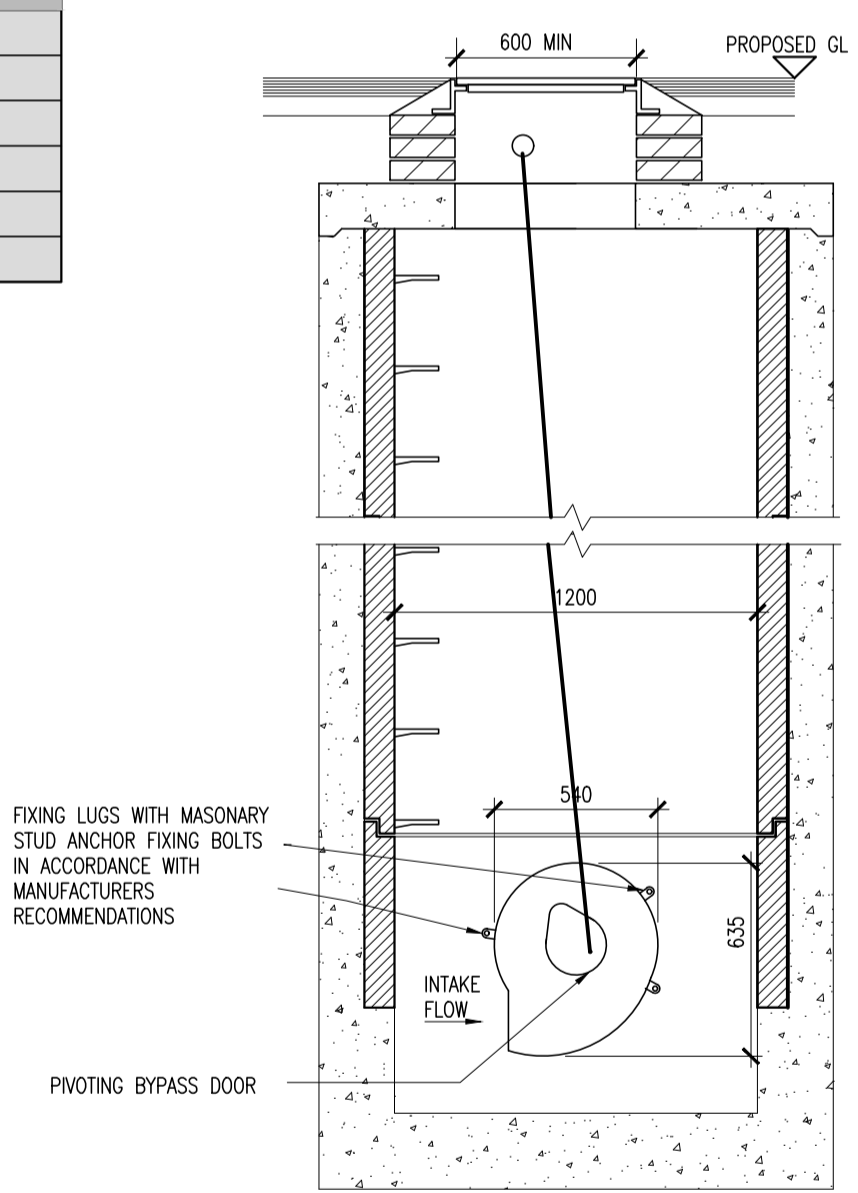
SCALE 1:25
(REFER TO IRISH WATER STANDARD DETAIL STD-W-30B & CODE OF PRACTICE SECTION 3.21 FOR FURTHER NOTES AND INFORMATION)

DIAMETER OF LARGEST PIPE IN MANHOLE (mm)	CHAMBER SECTION DIAMETER (mm)		
	1m - 3m	3m - 6m	6m - 12m
LESS THAN 375	1050	1050	1500
<600	1200	1200	1500
<675	1350	1350	1500
<750	1350	1500	1500
<900	1500	1500	1500
<1200	2100	2100	2100

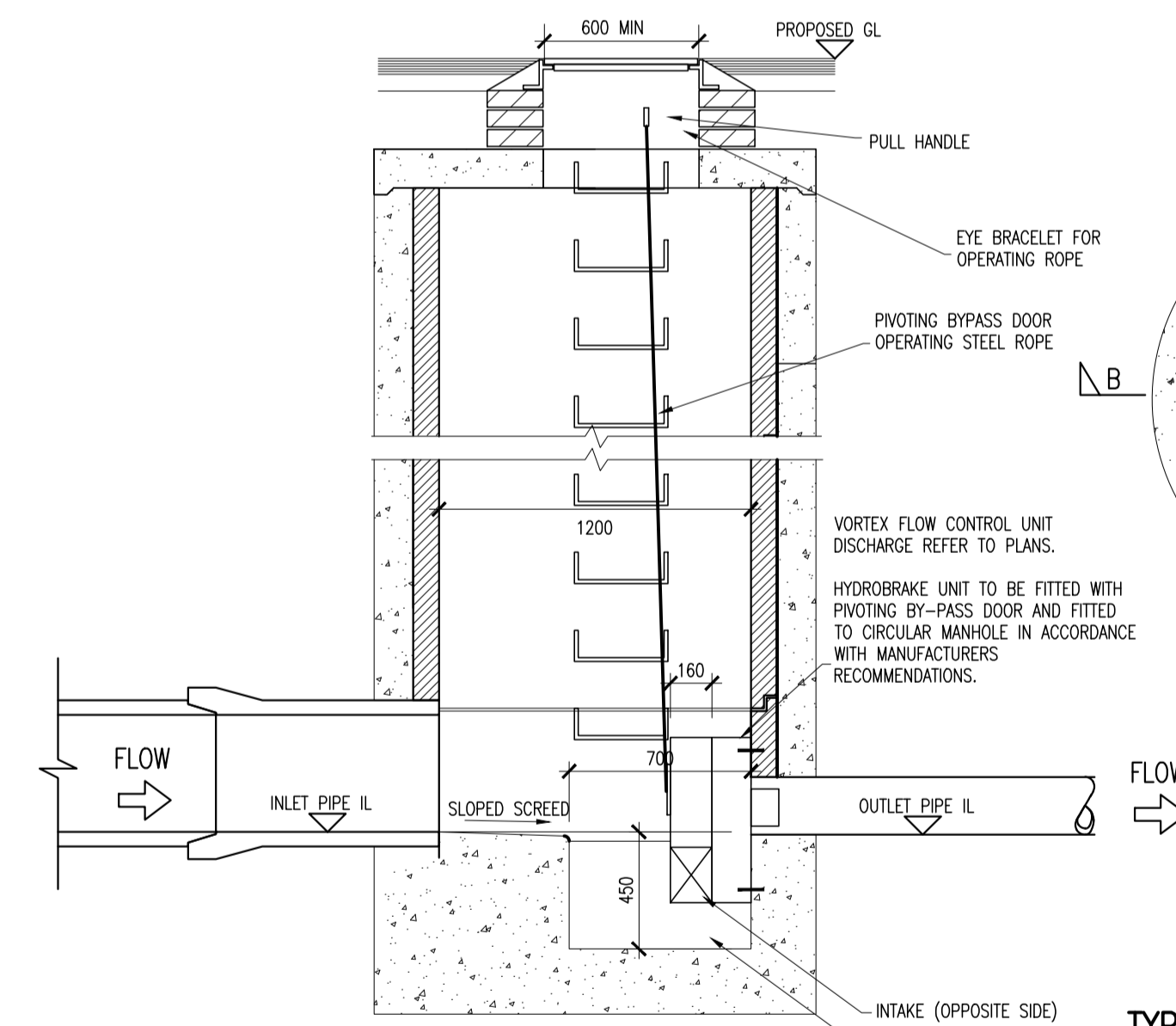
TABLE 1



DROPPED KERB (FOR OVERLAND FLOWPATH)

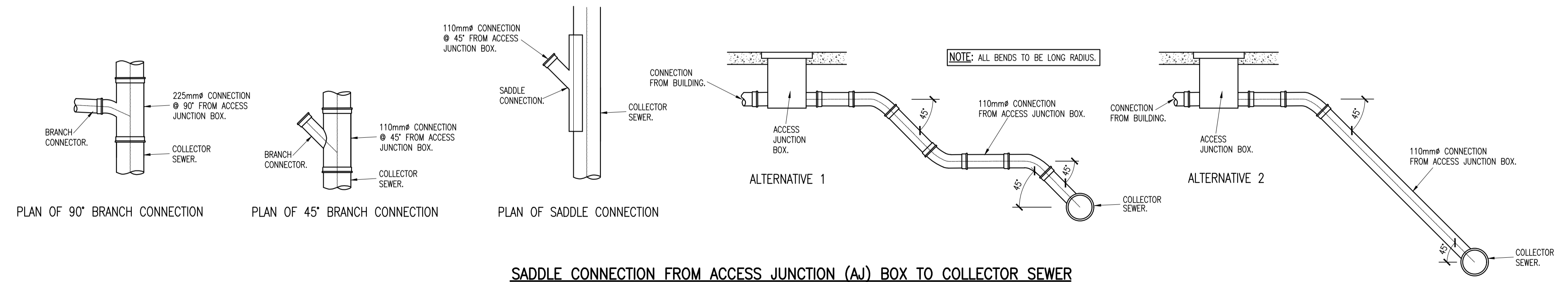


SECTION A-A



SECTION B-B

TYPICAL FLOW CONTROL CHAMBER
SCALE 1:25



SADDLE CONNECTION FROM ACCESS JUNCTION (A.J.) BOX TO COLLECTOR SEWER

rev	date	ISSUED FOR PLANNING	APW	LMCL
01	25/01/21	ISSUED FOR PLANNING	APW	LMCL
02		A - Approved		crkd
03		B - Approved with comments		
04		C - Do not use		

client approval
submittal
S2 - INFORMATION
PLANNING

DBFL Consulting Engineers
Civil, Structural & Transportation Engineering
www.dbfl.ie

DUBLIN OFFICE: Ormond House, Upper Ormond Quay, Dublin 7, D07 W704
PHONE: +353 1 400 4000
CORK OFFICE: Phoenix House, Monahan Road, Cork, T12 H1XV
PHONE: +353 (0) 21 2204538
WATERFORD OFFICE: Suite 10 The Ashurst, Marzana Gate, Canada Street, Waterford, X91 W028
PHONE: +353 51 309 500

project ref.
LISSYWOLLEN RESIDENTIAL DEVELOPMENT AT BRAUNY ROAD, LISSYWOLLEN, ATHLONE, CO. WESTMEATH

drawing title
STANDARD DETAILS SHEET 2 OF 4

architect
DELPHI ARCHITECTS

designed by	author	scale	sheet size
LMCL	KGO	AS	A1
drawing no.	revision		
180176-DBFL-XX-XX-DR-C-5003	P01		