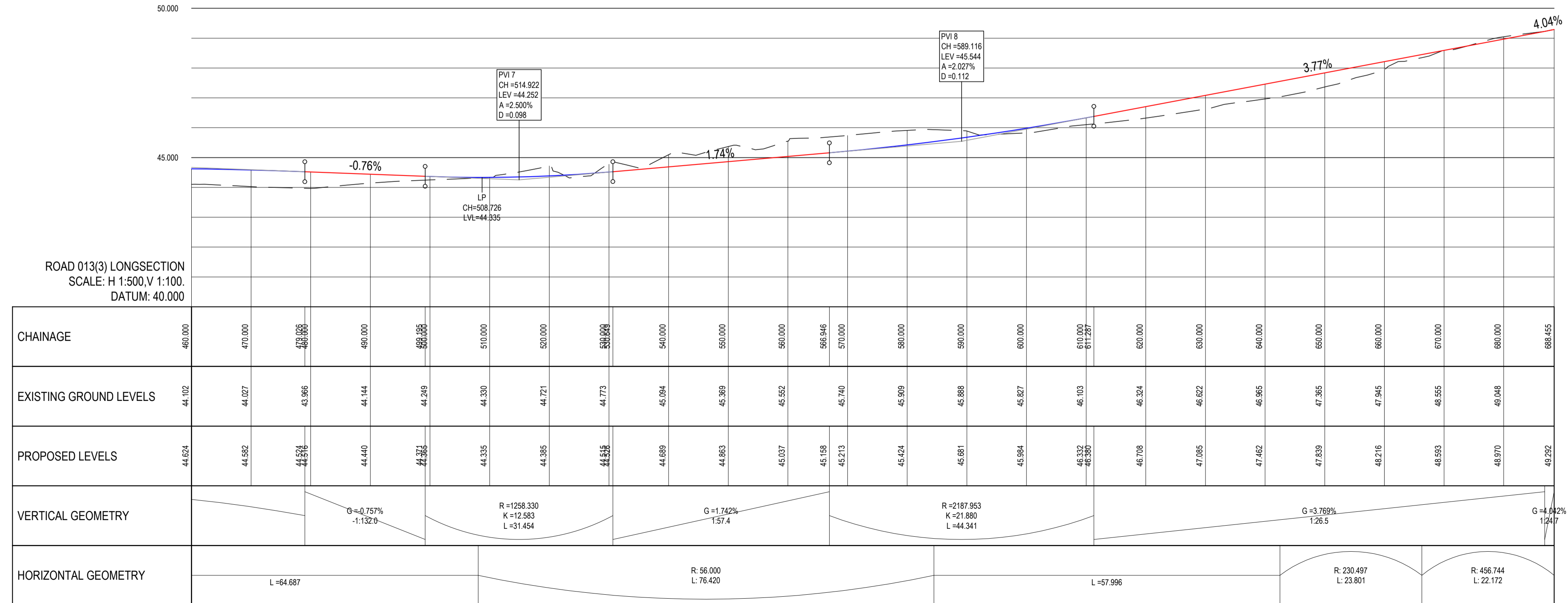
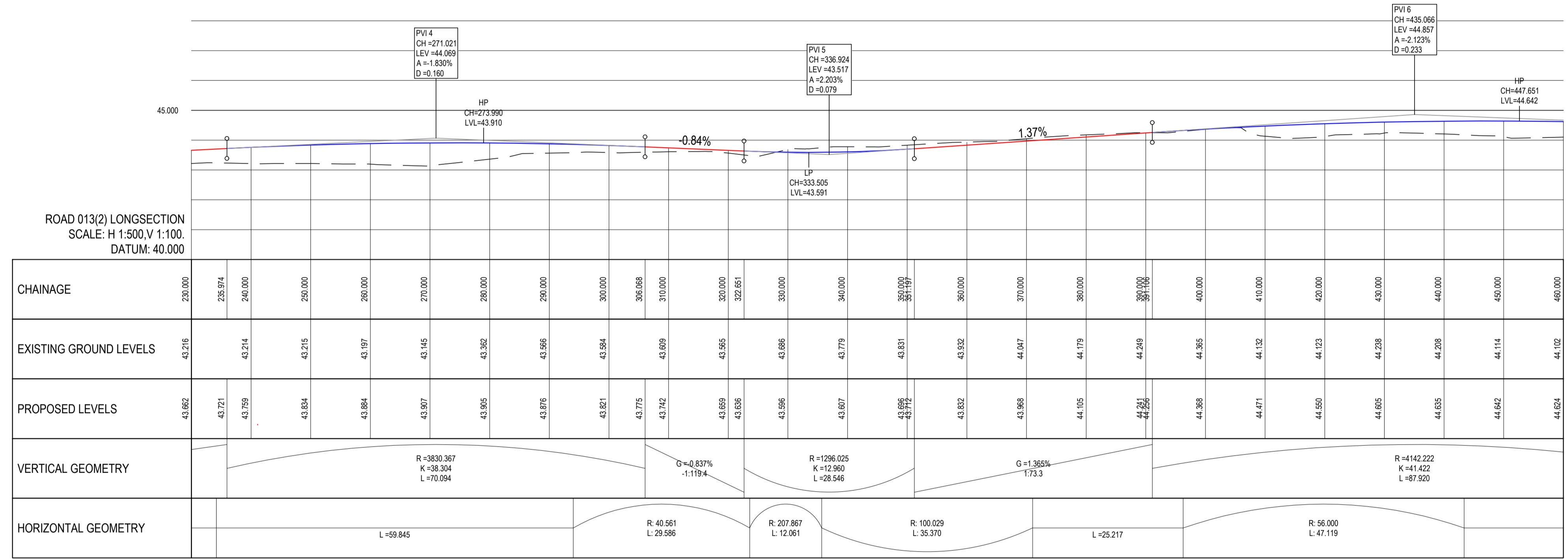
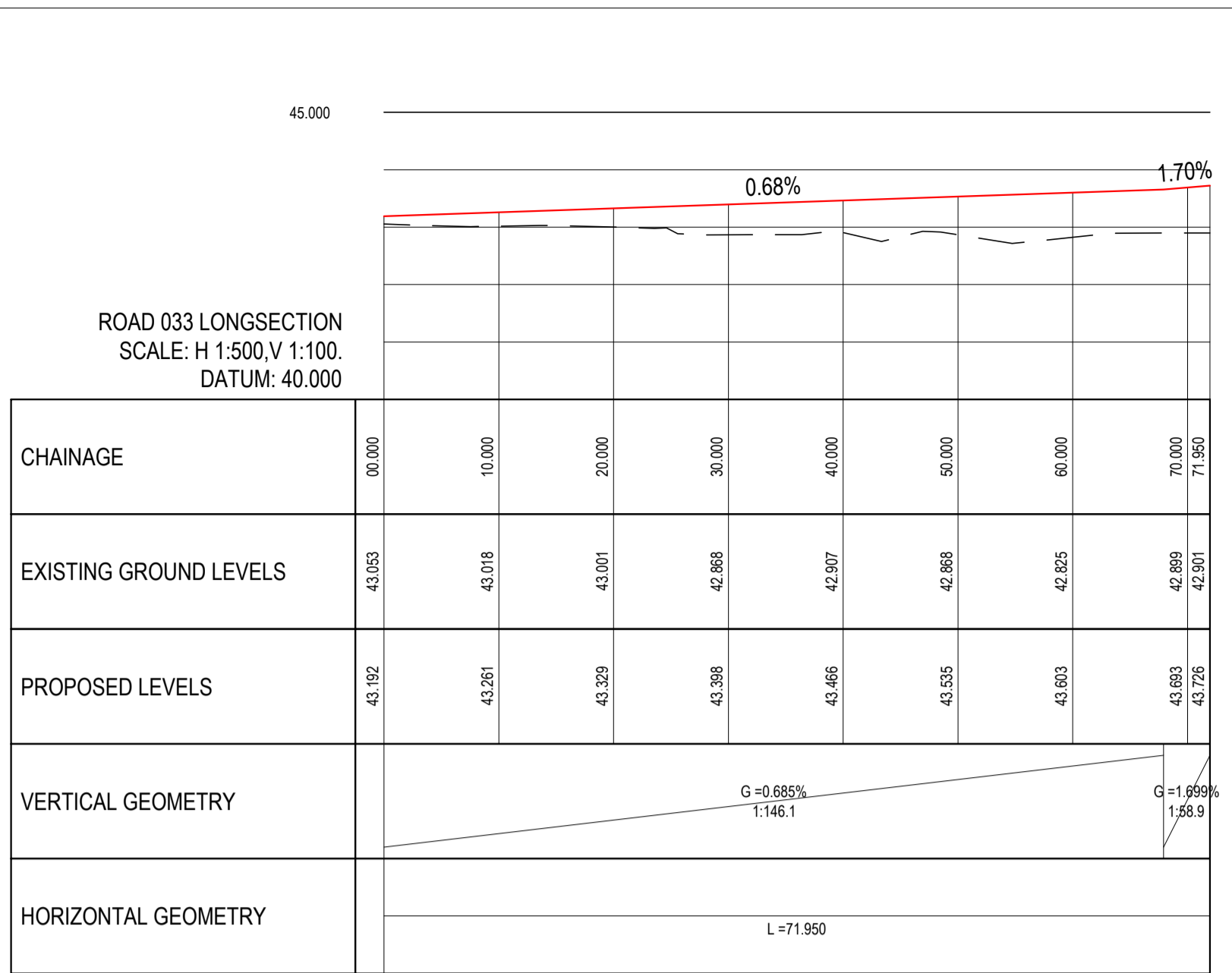
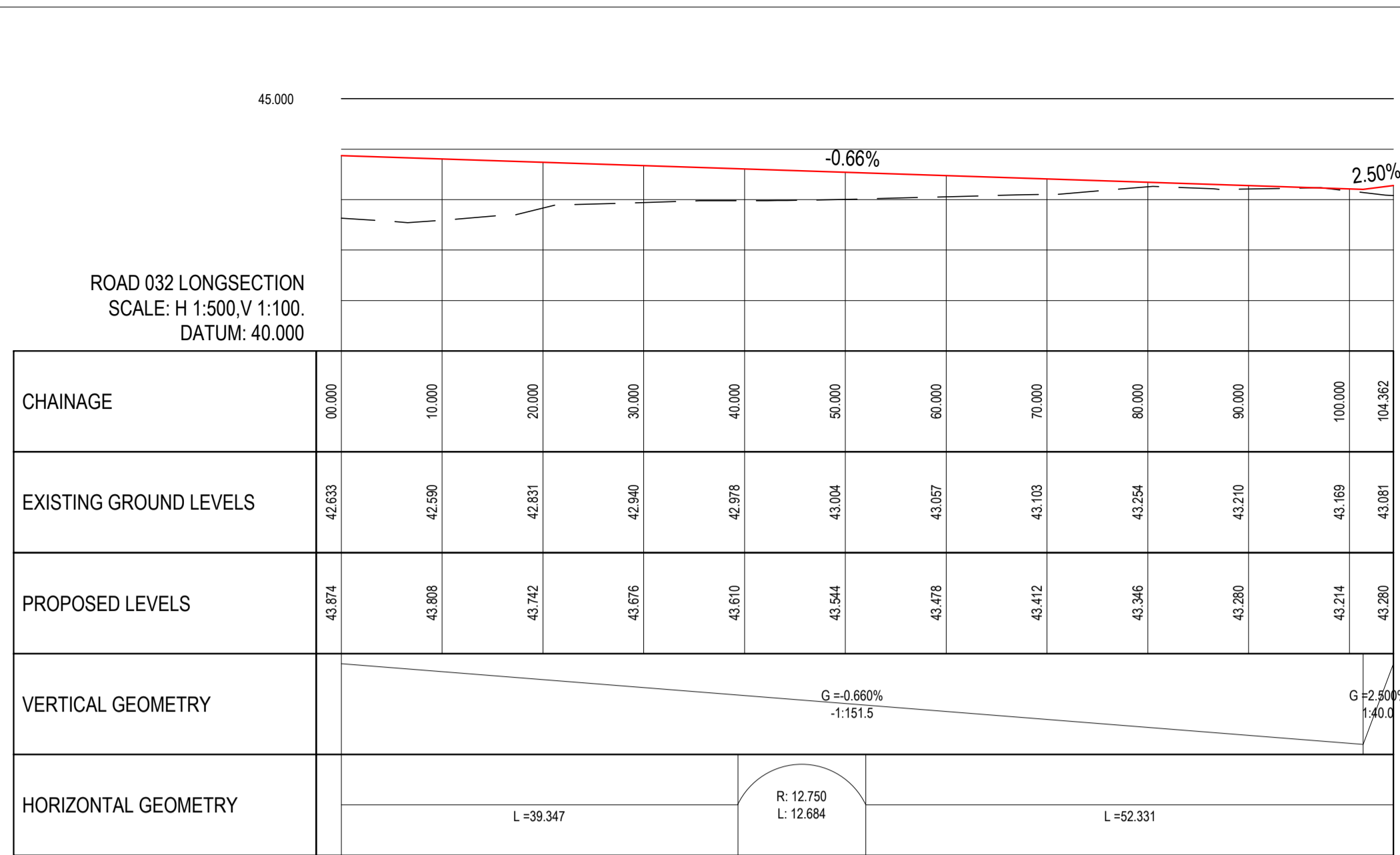
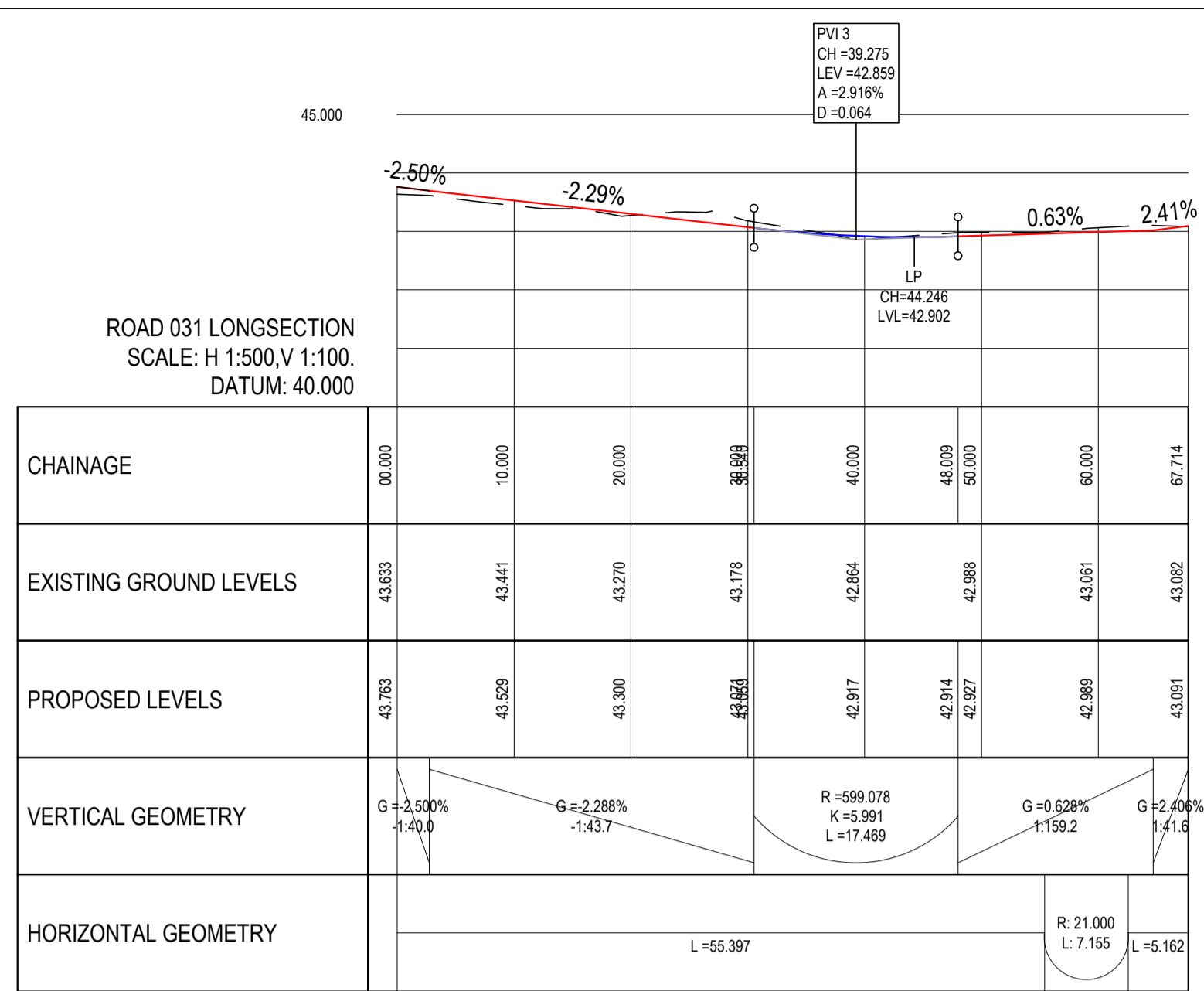


NOTES:



P01	25-01-21	ISSUED FOR PLANNING	KG0	LMCL
rev	date	description	by	chkd.
client approval	A - Approved			
	B - Approved with comments			
	C - Do not use			
suitability	S2 - INFORMATION		PLANNING	
DUBLIN OFFICE: Ormond House, Upper Ormond Quay, Dublin 7, D07 W704 PHONE: +353 1 404 4000 CORK OFFICE: Phoenix House, Monahan Road, Cork, T12 H1XV PHONE: +353 (0) 21 220 4533 WATERFORD OFFICE: Suite 10 The Arkham, Marzara Gate, Canossa Street, Waterford, X91 W028 PHONE: +353 51 309 500				
project ref. LISSYWOLLEN RESIDENTIAL DEVELOPMENT AT BRAUNY ROAD, LISSYWOLLEN, ATHLONE, CO. WESTMEATH				
drawing title ROAD LONGSECTIONS SHEET 6 OF 6				
architect DELPHI ARCHITECTS				
designed by	author	scale	sheet size	
LMCL	KG0	AS	A1	
drawing no.	revision			
180176-DBFL-RD-SP-DR-C-3005	P01			