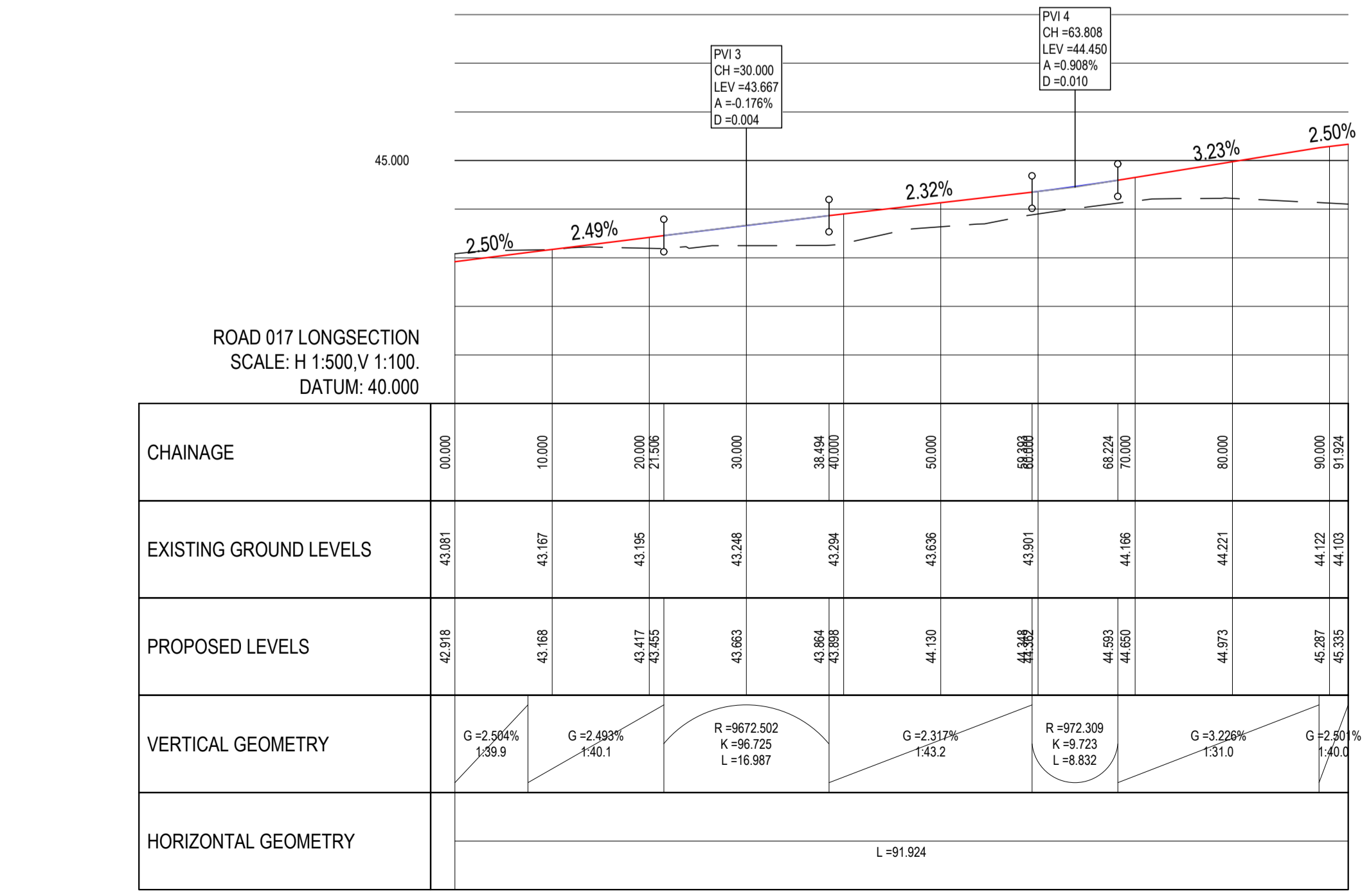
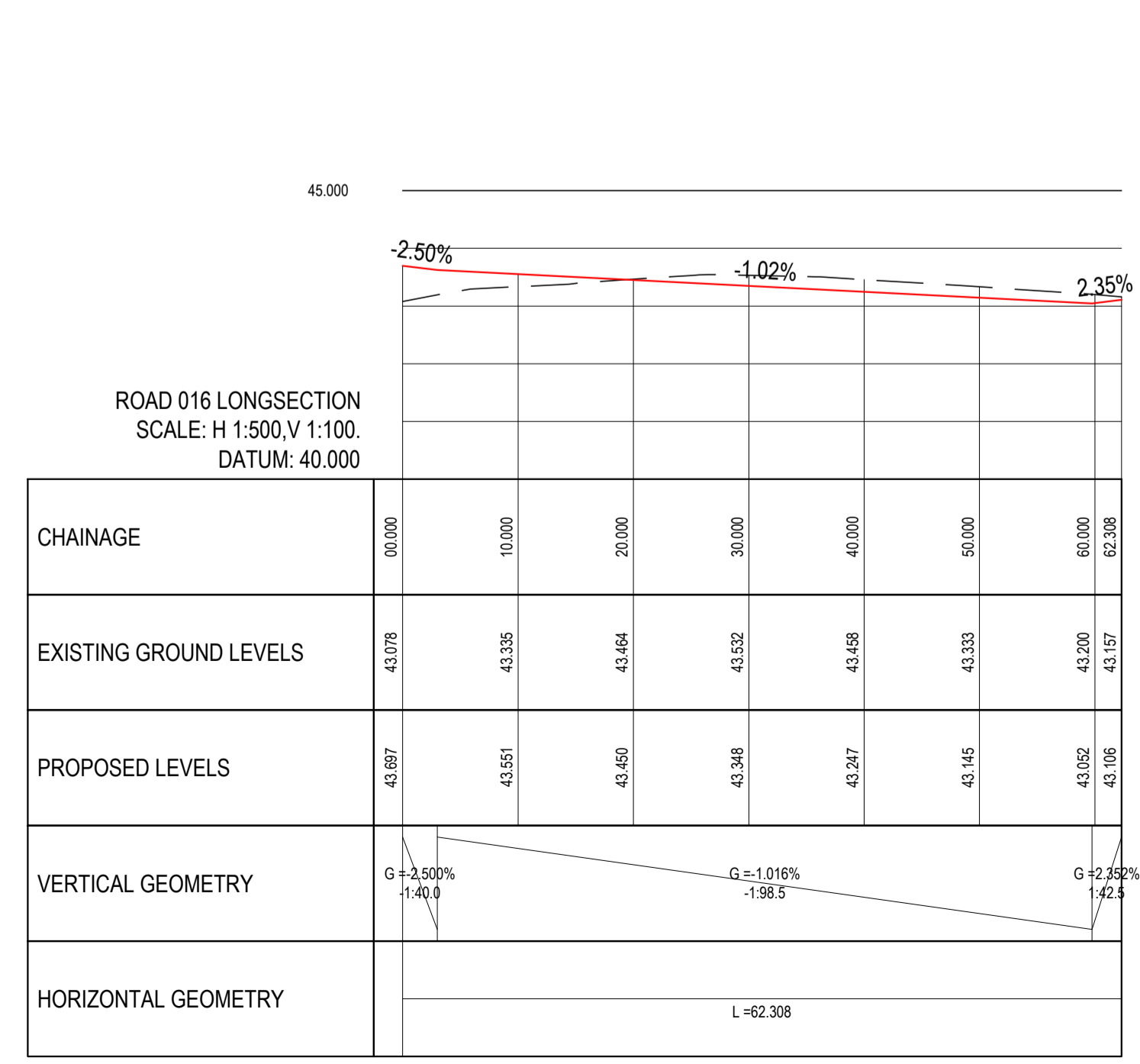
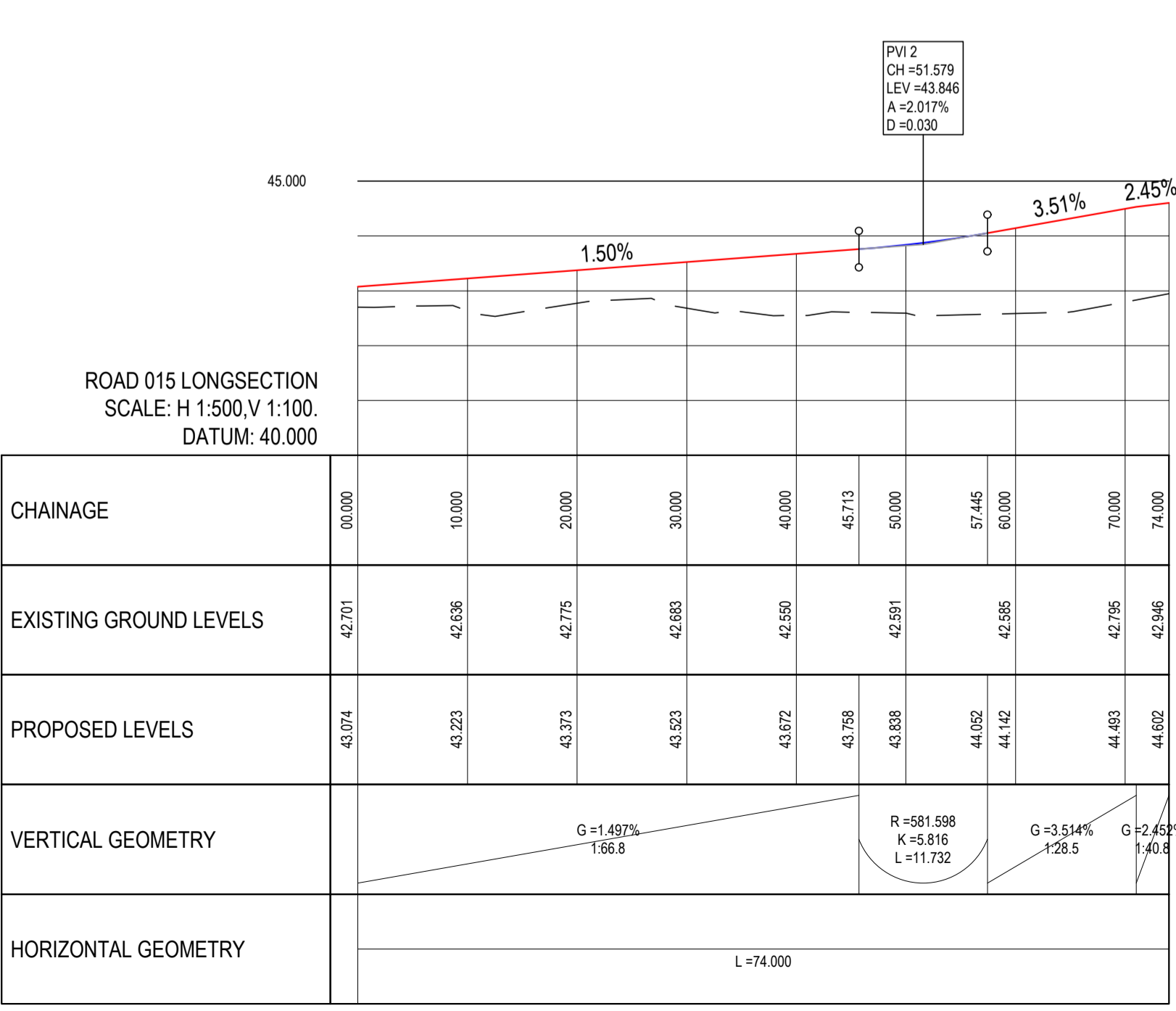
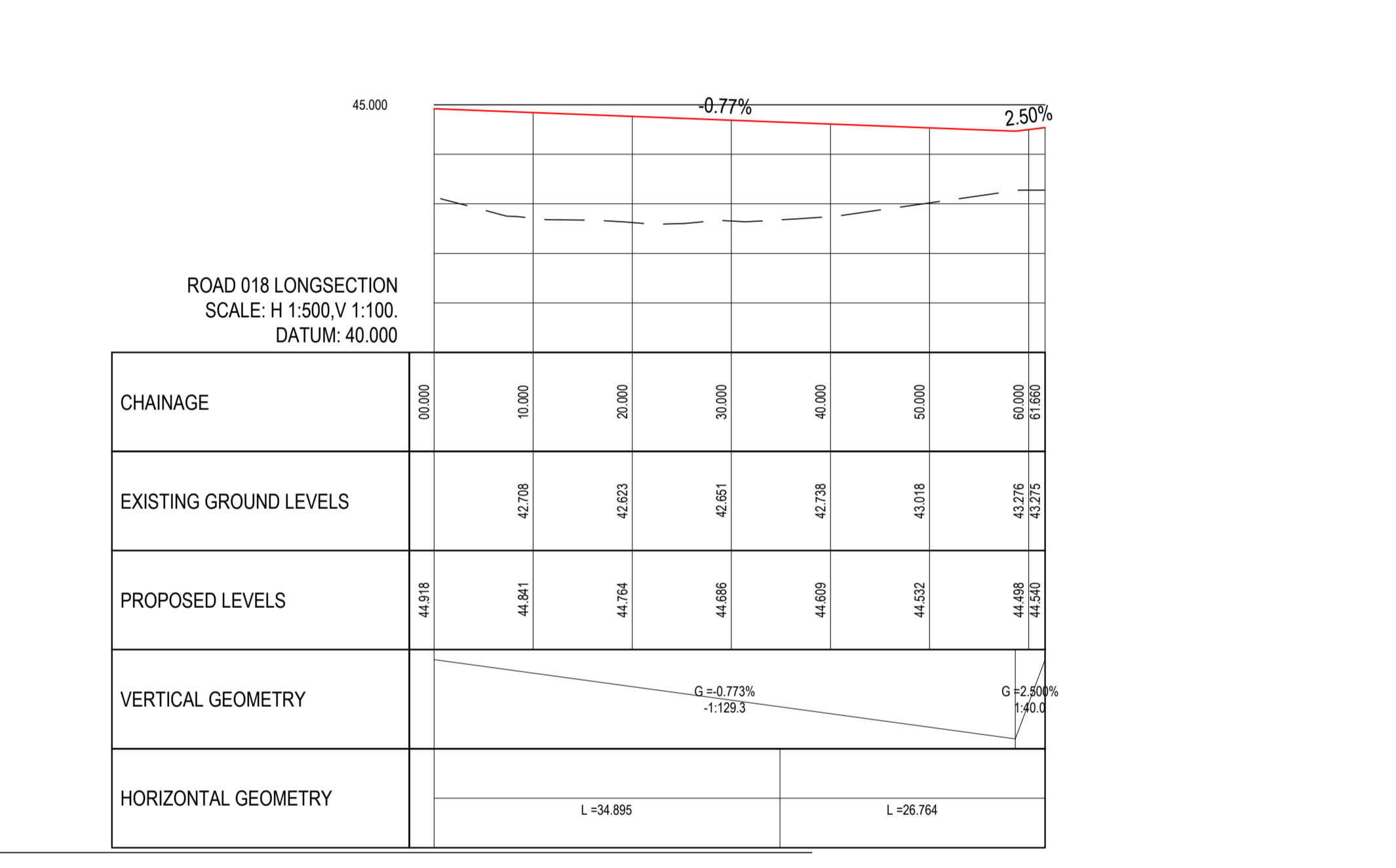
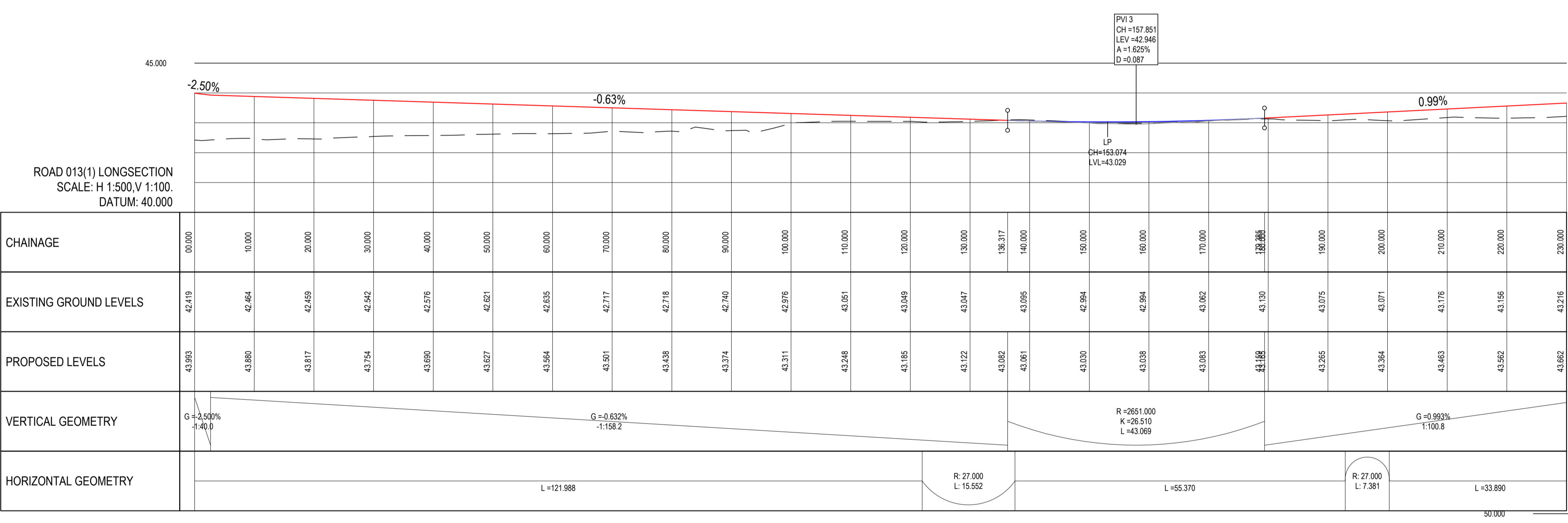
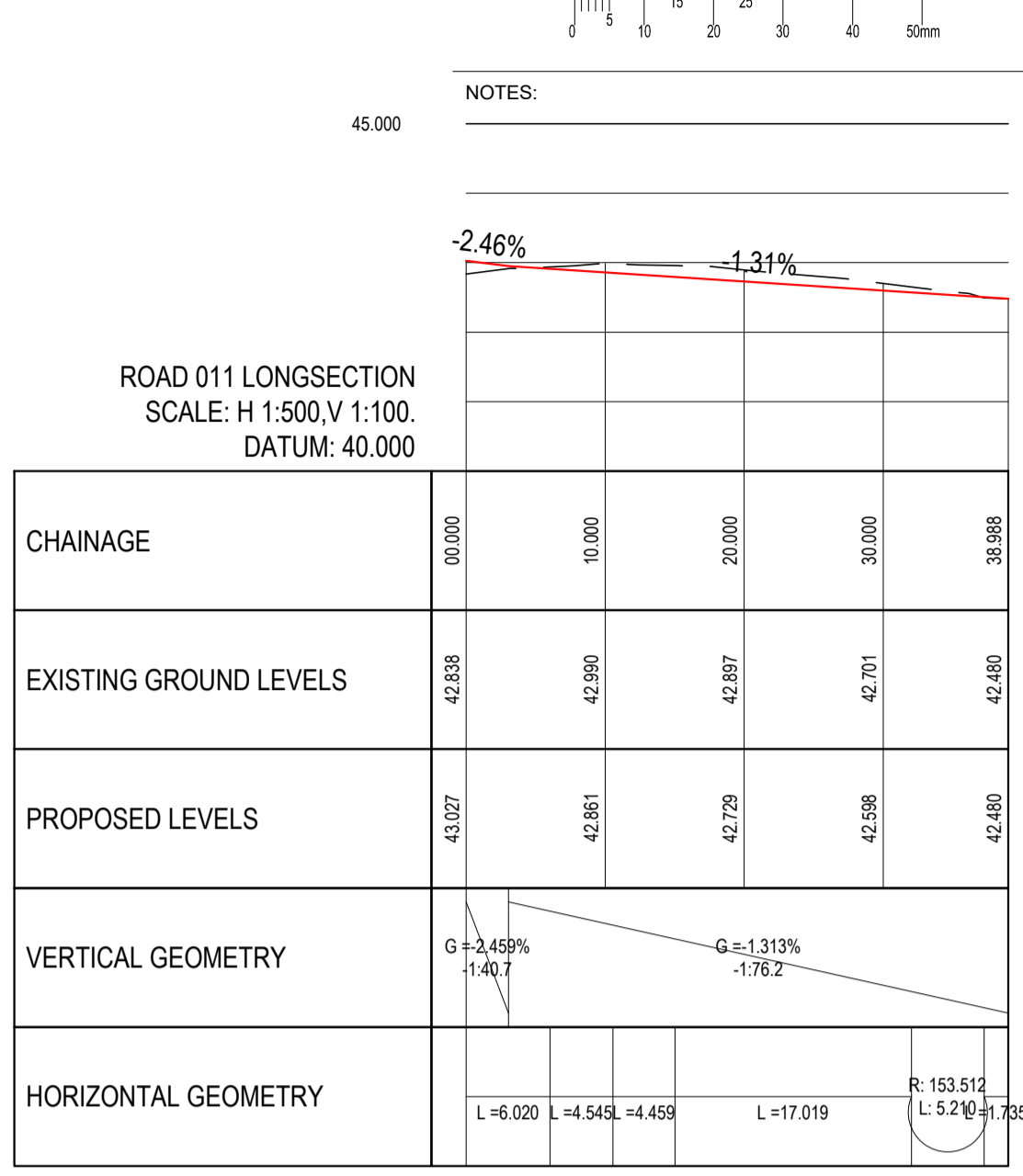
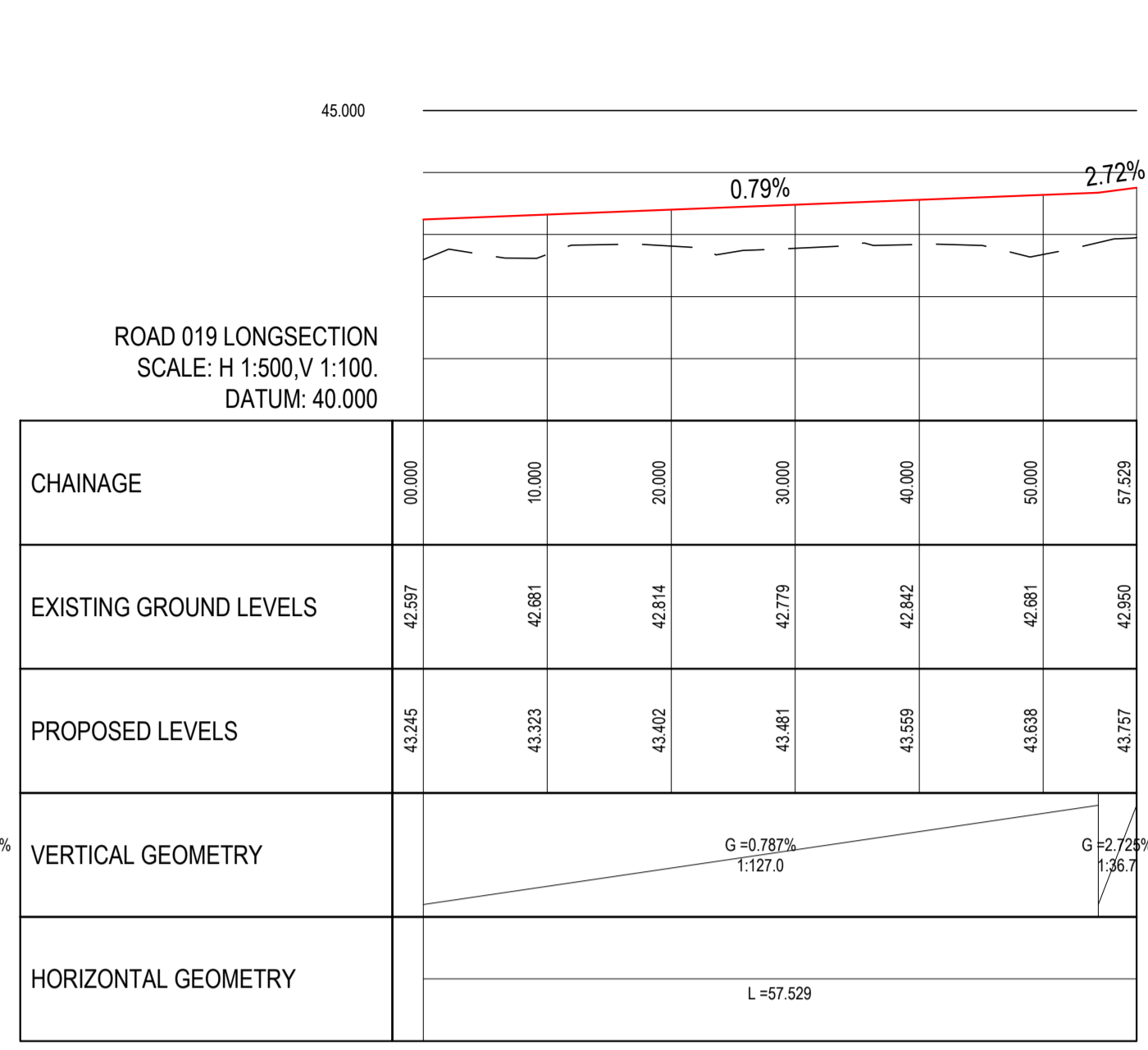
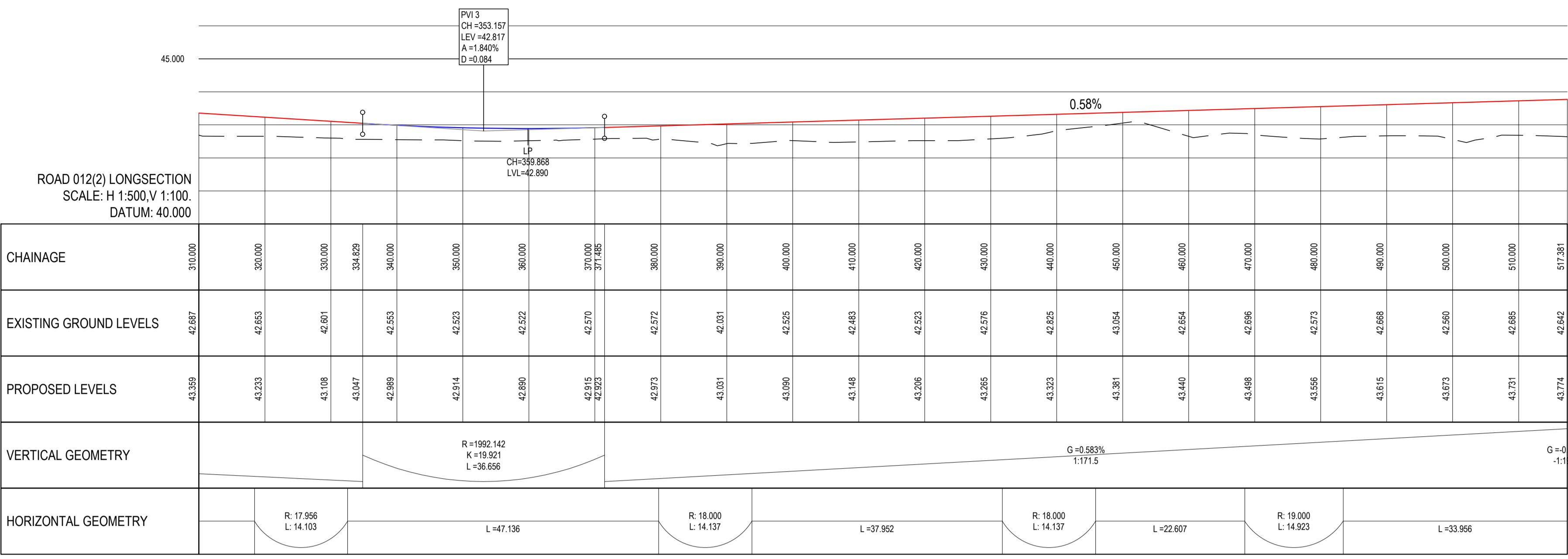


NOTES:



P01	25-01-21	ISSUED FOR PLANNING	KG0	LMCL
rev	date	description	by	chkd.
		A - Approved		
		B - Approved with comments		
		C - Do not use		
client approval				
sustainability		issue purpose		
S2 - INFORMATION		PLANNING		
DBFL Consulting Engineers Civil, Structural & Transportation Engineering www.dbfl.ie				
DUBLIN OFFICE: Ormond House, Upper Ormond Quay, Dublin 7, D07 W704 PHONE: +353 (0) 1 404 4000				
CORK OFFICE: Phoenix House, Monahan Road, Cork, T12 H1VY PHONE: +353 (0) 21 205433				
WATERFORD OFFICE: Sun 10 The Ashken, Maritime Gate, Canada Street, Waterford, X91 W028 PHONE: +353 (0) 51 909 500				
project ref.				
LISSSWOLLEN RESIDENTIAL DEVELOPMENT AT BRAUNY ROAD, LISSSWOLLEN, ATHLONE, CO. WESTMEATH				
drawing title				
ROAD LONGSECTIONS SHEET 3 OF 6				
architect				
DELPHI ARCHITECTS				
designed by		author	scale	sheet size
LMCL		KG0	AS	A1
drawing no.		revision		
180176-DBFL-RD-SP-DR-C-3002		P01		